

NDTC Quarterly Outcomes Report

2-19-2020

Agenda

- Updates on data connection issues with Credible
- CANS Item Updates
- Child Services Updates
- Adult Services Updates



Credible Data issues

- Our direct connection to Credible through web services isn't working
- Our data team is now going to request a data export on a quarterly basis, and use that to update the information.
- We will continue to monitor the situation.



CANS Item Name Updates

Most significant changes:

Old Name	New Name
Antisocial Behavior	Conduct
Danger to Self	Suicide Risk
Social Behavior	Intentional Misbehavior
Communication	Neuro-Communication Disorders
Maladaptive Behaviors	Repetitive and Restrictive Behaviors
Inclusion	Community Life

CDR CANS-PA



PROBLEM PRESENTATION	
Psychosis (Thought Disorder)	0 1 2 3
Impulsivity/Hyperactivity	0 1 2 3
Autism Spectrum	0 1 2 3
Depression/Anxiety	0 1 2 3
Oppositional Behavior	0 1 2 3
Conduct	0 1 2 3
Anger Control	0 1 2 3
Substance Use*	0 1 2 3
Severity of Use	0 1 2 3
Duration of Use	0 1 2 3
Stage of Recovery	0 1 2 3
Peer Influences	0 1 2 3
Parental Influences	0 1 2 3
Environmental Influences	0 1 2 3
Adjustment to Trauma*	0 1 2 3
Affect Regulation	0 1 2 3
Intrusion	0 1 2 3
Dissociation	0 1 2 3
Attachment Difficulties	0 1 2 3
RISK BEHAVIORS	
Suicide Risk	0 1 2 3
Danger to Others	0 1 2 3
Other Self Harm	0 1 2 3
Runaway	0 1 2 3
Exploitation	0 1 2 3
Sexually Aggressive Behavior (SAB)*	0 1 2 3
Prior Treatment	0 1 2 3
Severity of Sexual Abuse	0 1 2 3
History of SAB	0 1 2 3
Temporal Consistency	0 1 2 3
Response to Accusation	0 1 2 3
Type of Sex Act	0 1 2 3
Age Differential	0 1 2 3
Planning	0 1 2 3
Physical Force/Threat	0 1 2 3
Relationship	0 1 2 3
Intentional Misbehavior	0 1 2 3
Delinquent Behavior	0 1 2 3
Firearms Risk	0 1 2 3
Fire Setting*	0 1 2 3
Seriousness	0 1 2 3
History	0 1 2 3
Planning	0 1 2 3
Accelerants	0 1 2 3
Intention	0 1 2 3
Community Safety	0 1 2 3
Accusation	0 1 2 3
Remorse	0 1 2 3

FUNCTIONING	
Intellectual Disability	0 1 2 3
Medical/Physical	0 1 2 3
Sleep	0 1 2 3
Family	0 1 2 3
Living Situation	0 1 2 3
Social Functioning	0 1 2 3
School Achievement	0 1 2 3
School Behavior	0 1 2 3
School Attendance	0 1 2 3
Sexual Development	0 1 2 3
Sensory/Motor Functioning*	0 1 2 3
Gross Motor	0 1 2 3
Fine Motor	0 1 2 3
Coordination	0 1 2 3
Vision and Hearing	0 1 2 3
Sensory Responsiveness	0 1 2 3
Neuro-Communication Disorders*	0 1 2 3
Augmented Communication	0 1 2 3
Receptive Language	0 1 2 3
Expressive Language	0 1 2 3
Speech - Sound Production	0 1 2 3
Social/Pragmatic Language	0 1 2 3
Stereotyped Sound Output	0 1 2 3
Gestures	0 1 2 3
Repetitive and Restrictive Behaviors*	0 1 2 3
Repetitive Behaviors	0 1 2 3
Restricted Interests	0 1 2 3

CHILD SAFETY	
Safety	0 1 2 3

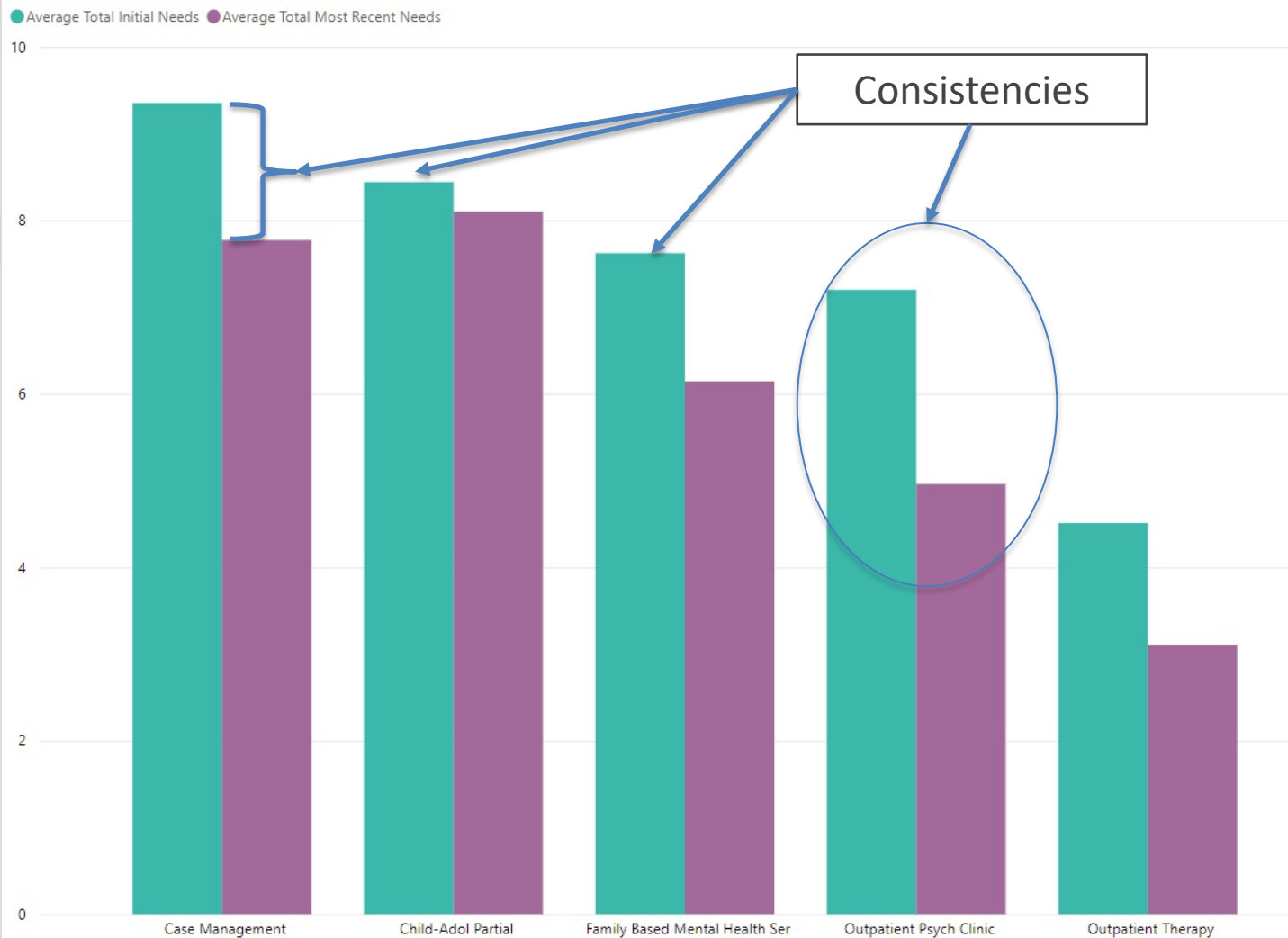
CAREGIVER NEEDS	
Caregiver Behavioral/Physical Health	0 1 2 3
Supervision	0 1 2 3
Involvement with Care	0 1 2 3
Knowledge	0 1 2 3
Organization	0 1 2 3
Resources	0 1 2 3
Residential Stability	0 1 2 3

STRENGTHS	
Family Strengths	0 1 2 3
Interpersonal	0 1 2 3
Relationship Permanence	0 1 2 3
Educational Setting	0 1 2 3
Vocational	0 1 2 3
Well-being	0 1 2 3
Optimism	0 1 2 3
Spiritual/Religious	0 1 2 3
Talents & Interests	0 1 2 3
Community Life	0 1 2 3
Resiliency	0 1 2 3
Resourcefulness	0 1 2 3

*A score of 1 or higher requires the completion of the remaining questions in module.

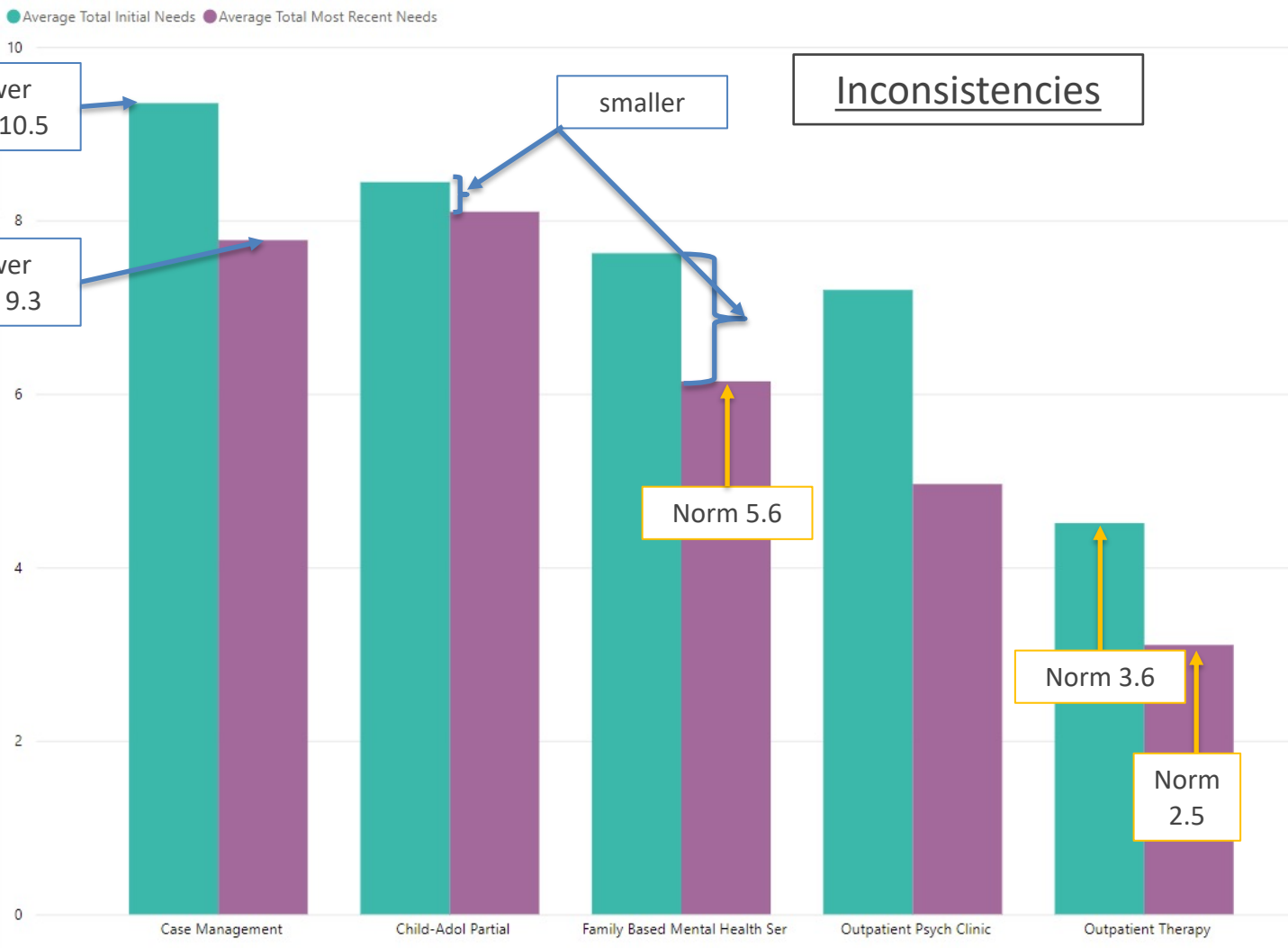
NDTC Children's Services

All clients receiving a second measure 1/1/2020 - 12/10/2020)



NDTC Children's Services

All clients receiving a second measure 1/1/2020 - 12/10/2020)



Inconsistencies



program_desc	Average Total Initial Needs	Average Total Most Recent Needs	Count of Clients Observed	Time Between Measures (Months)	Norm
Case Management	9.35	7.77	83	19.36	15
Child-Adol Partial	8.44	8.10	41	8.12	6.4
Family Based Mental Health Ser	7.62	6.14	63	5.03	
Outpatient Psych Clinic	7.20	4.96	97	5.88	
Outpatient Therapy	4.51	3.10	153	14.80	9.6

Longer TBM


* Please note there are clients double counted in here, because they show up independently in each program.

Date of Start of Treatment

4/22/2016 12/10/2020

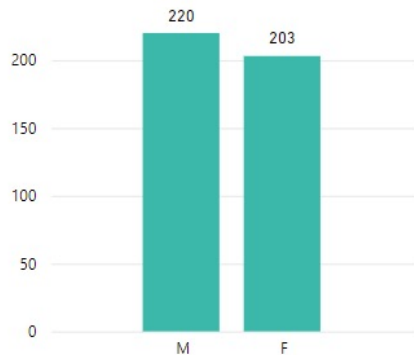
Date at Most Recent

1/1/2020 12/10/2020

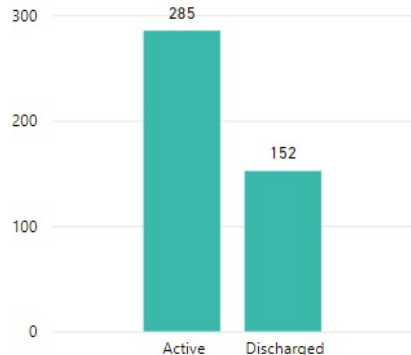


Demographics for all Client-level Analysis: Click any bar to see more information on that Subpopulation

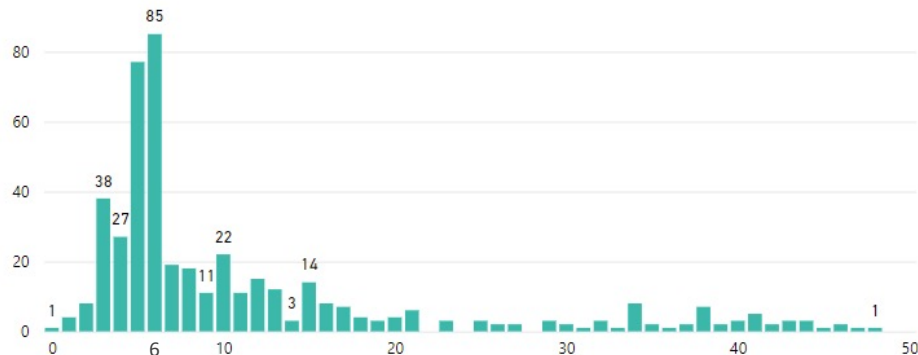
Number of Clients by Gender



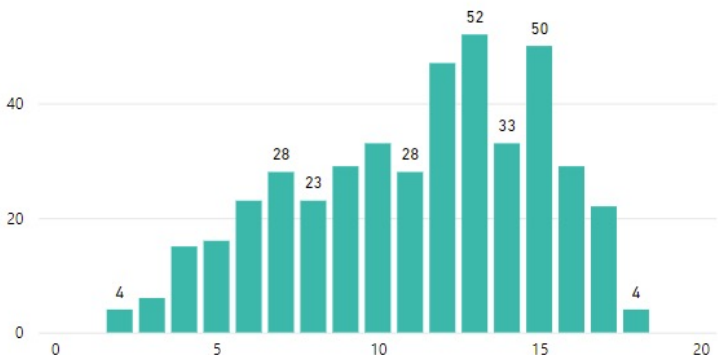
Number of Clients by Status



Number of Clients by Time Between Measures (Months)



Number of Clients by Age at Start of Treatment (May be counted at different ages for di...)



Program

- Brief Treatment
- Case Management
- Child-Adol Partial
- Family Based Mental Health Ser
- Functional Family Therapy
- IBHS
- Outpatient Psych Clinic
- Outpatient Therapy

Geographic Area (Scroll)

- Altoona Outpatient
- Bedford Child-Adol PHP
- Bedford FFT
- Bedford HCS

Office Location (scroll)

- Agency Office
- Bedford Office Outpatient
- Bedford Outpatient Phone
- Bedford Outpatient Televideo

Employee (Scroll for more)

- Adams, Nichole
- Ashbrook, Tracy
- Ayres, Daniel
- Balliet, Elizabeth

History of Treatment in this Program

- Active - First Recorded Treatment
- Active - Re-Entered Program
- Discharged - Treated More than Once
- Discharged - Treated Once

Date of Start of Treatment

4/22/2016 11/16/2020

Time Between Measures (Months)

0 48

Age at Start of Treatment

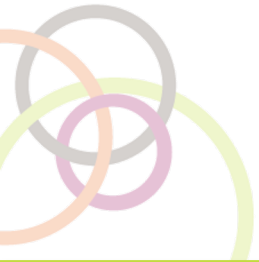
1 20



Comments on Child Services 2020

- No IHDC
- BCM saw a reduced incoming and outgoing score, but the gap between the two (“average impact”) remained consistent with norms. Time Between Measures in the program was longer than previous norms.
- Incoming scores for CPHP is consistent, but the exiting score was much higher than norm, and the Time between measures in the program grew.
- FBMH is consistent in its incoming scores and Time Between Measures, but had a slightly higher exiting score than norms
- Psychiatric clinic looks very consistent in incoming and outgoing scores with norms.
- Outpatient therapy saw a rise in its incoming and outgoing severity, and a longer average ‘length between measures’ than norms.

Adult Services



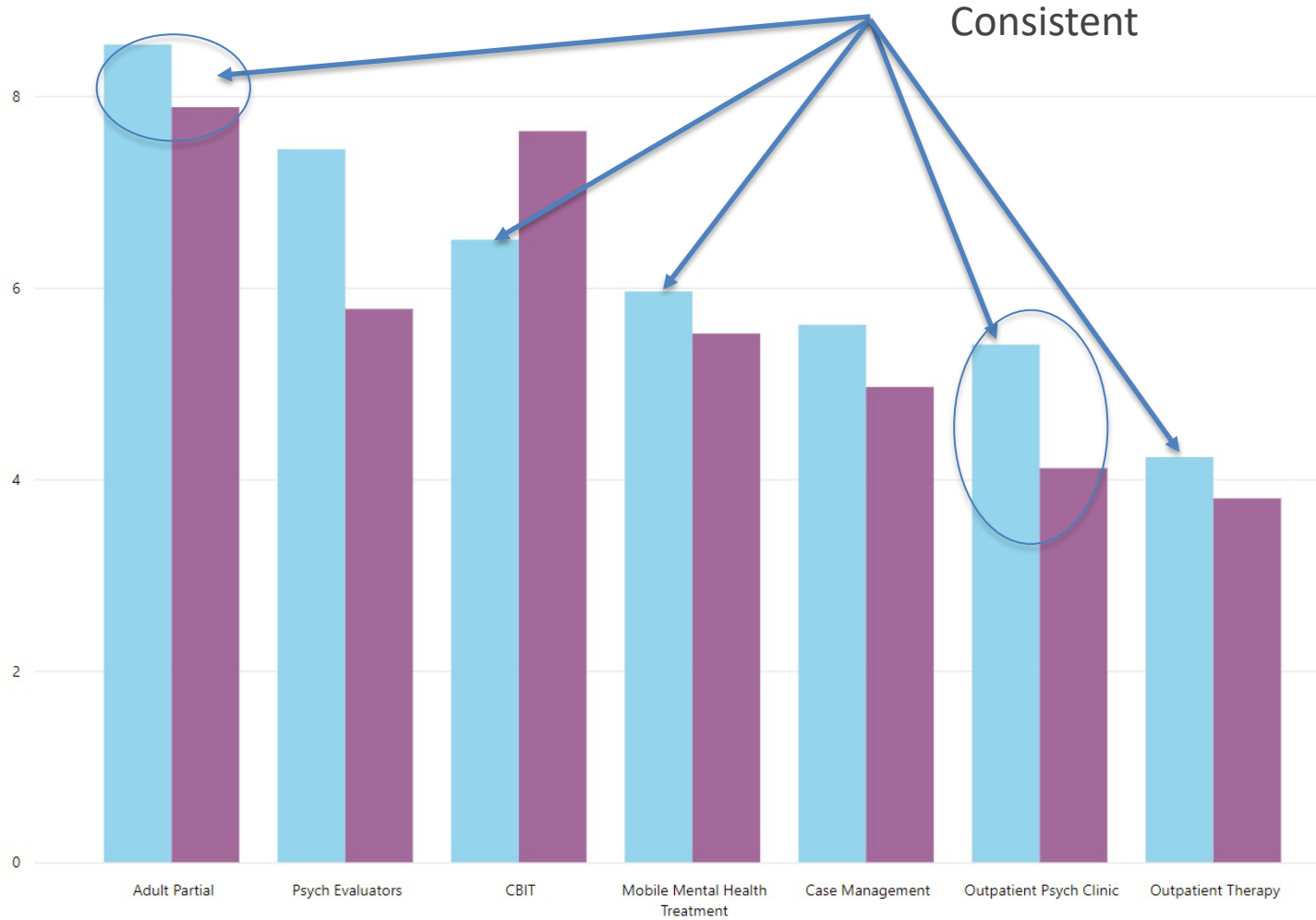
ANSA updates

- Social Determinants of Health?
- ANSA item name updates

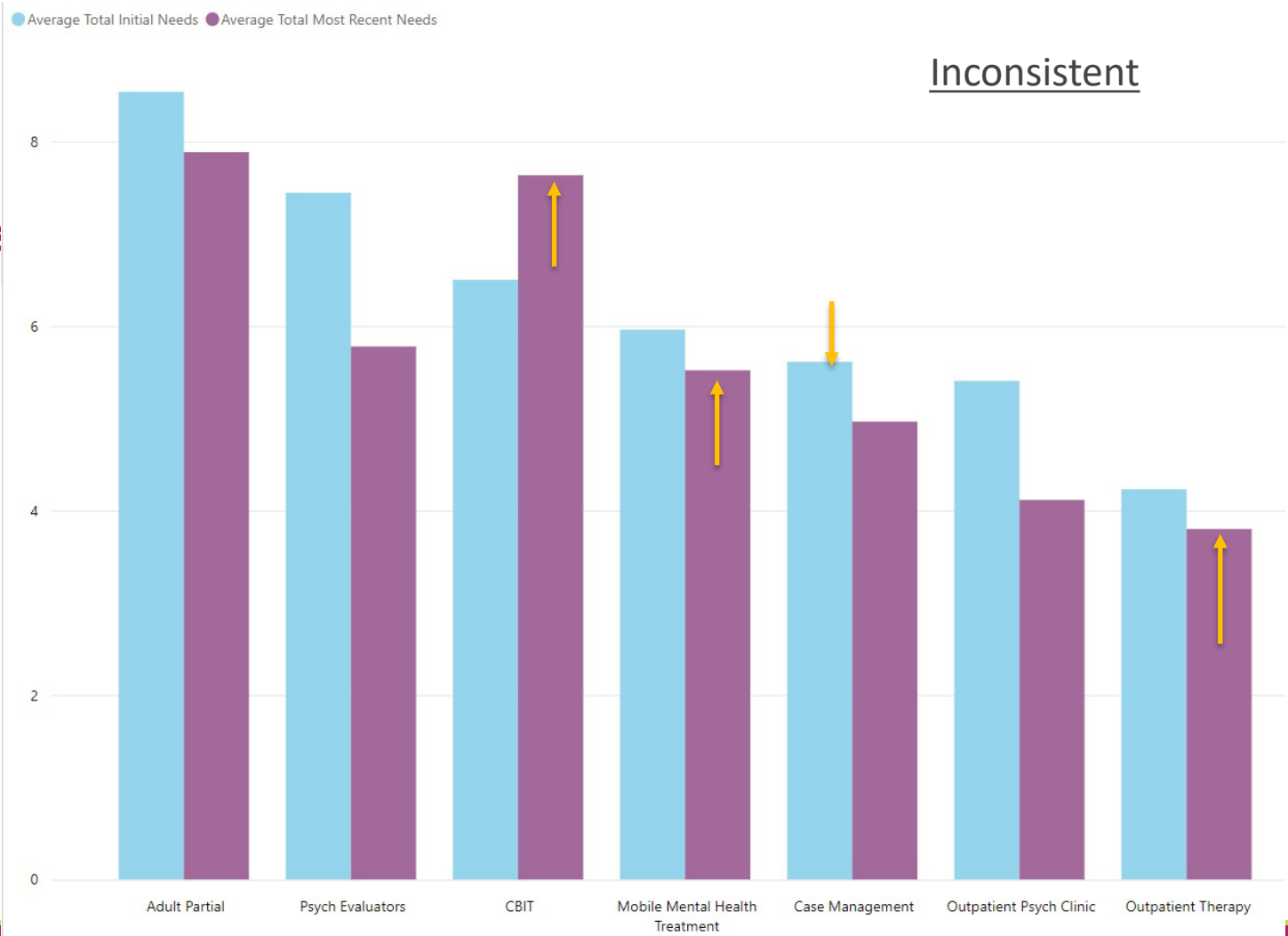


NDTC Adult Services

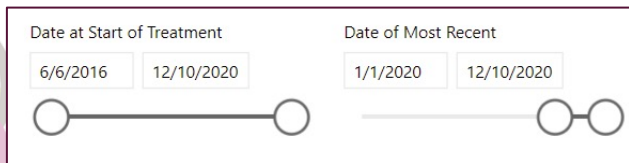
● Average Total Initial Needs ● Average Total Most Recent Needs



NDTC Adult Services



Program	Average Total Initial Needs	Average Total Most Recent Needs	Count of Clients Observed	Time Between Measures (Months)	Norm
Adult Partial	8.54	7.88	26	7.46	5
Psych Evaluators	7.44	5.78	9	5.89	5
CBIT	6.50	7.63	30	4.90	4.59
Mobile Mental Health Treatment	5.96	5.52	50	13.80	12.35
Case Management	5.61	4.96	790	18.74	15.12
Outpatient Psych Clinic	5.41	4.11	279	6.03	4.97
Outpatient Therapy	4.23	3.80	743	22.99	15.17



↑

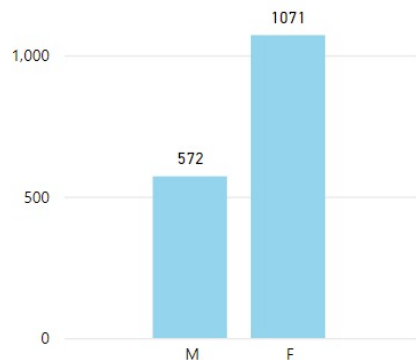
General trend to lengthening

Summary

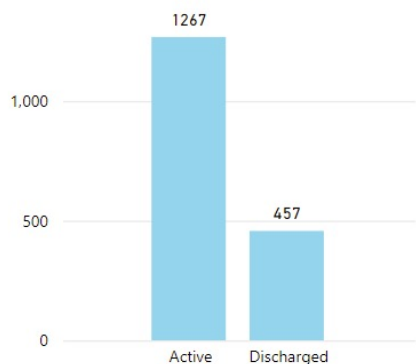
- Incoming scores were very consistent in adults services in 2020. One exception is BCM, which had a slight reduction in incoming severity.
- There were elevated second measure scores in CBIT, MMHT, and outpatient therapy (psych services was very consistent).
- There was a trend towards longer Time Between Measures in adult services



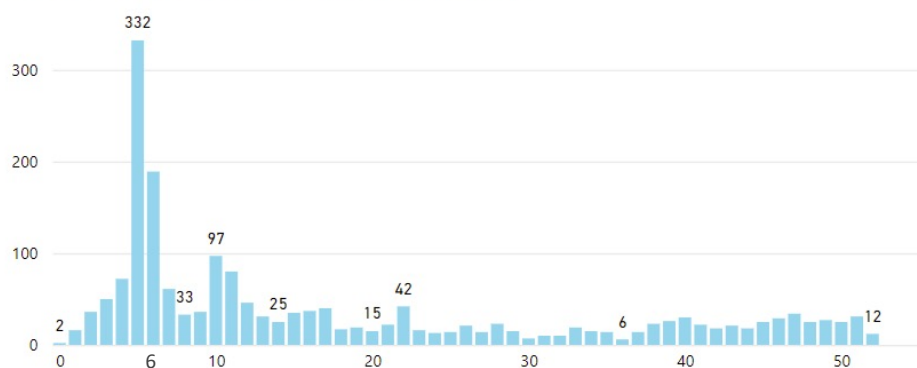
Number of Observed Clients by Gender



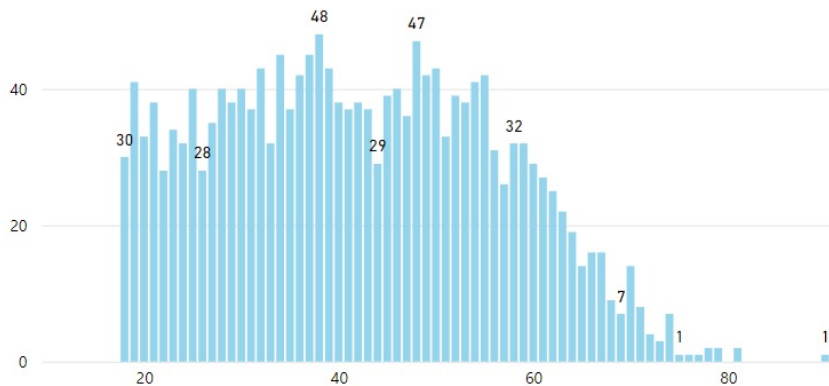
Number of Observed Clients by Active or Dischar...



Number of Observed Clients by Time Between Measures (Months)



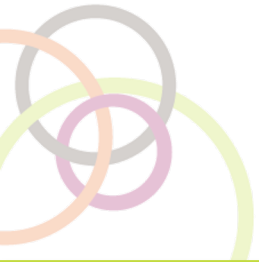
Number of Observed Clients by Age at Start of Treatment



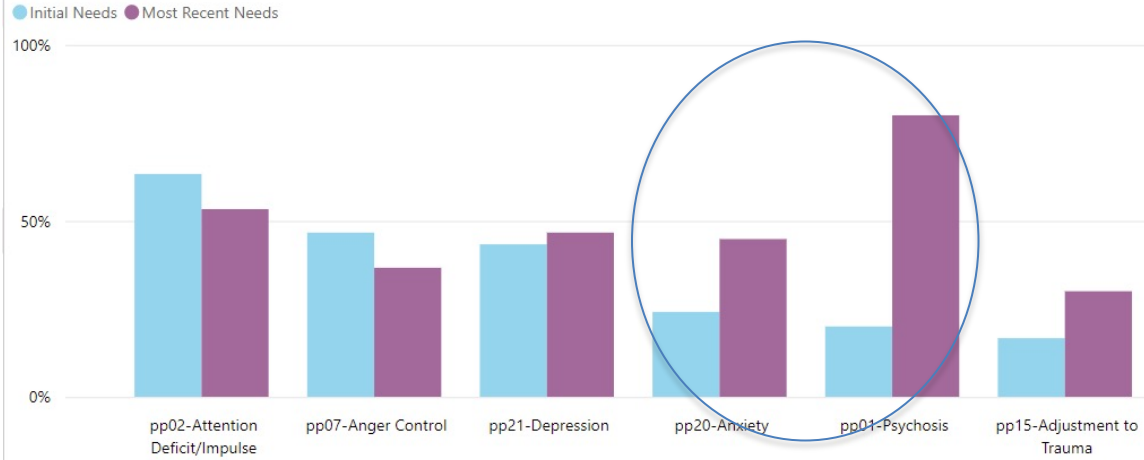
Filtering options:

- Program Description**
 - Adult Partial
 - Case Management
 - CBIT
 - Mobile Mental Health Treatment
- Employee (Scroll for m...)**
 - Adams, Nichole
 - Adiaconitei, Andreea
 - Akers, Ryan
 - Alexander, Edward
 - Ayres, Daniel
 - Ayres, Ian
 - Balliet, Elizabeth
 - Balzarano, Victoria
 - Bantly, Gladys
 - Belcher, Clinton
- Office Location (Scroll)**
 - Adult Partial Hospitalization
 - Adult Partial Hospitalization Phone
 - Adult Partial Hospitalization Televideo
 - Agency Office
- Geographic Area (Scroll)**
 - Adult Partial Hospitalization
 - Altoona Outpatient
 - Bedford HCS
 - Bedford Outpatient
- History of Treatment**
 - Active - First Recorded Treatment
 - Active - Re-Entered Program
 - Discharged - Treated More than Once
 - Discharged - Treated Once
- Date at Start of Treatment**
 - 6/6/2016
 - 10/30/2020
- Age at Start of Treatment**
 - 18
 - 95
- Time Between Measures (Mon...)**
 - 0
 - 52

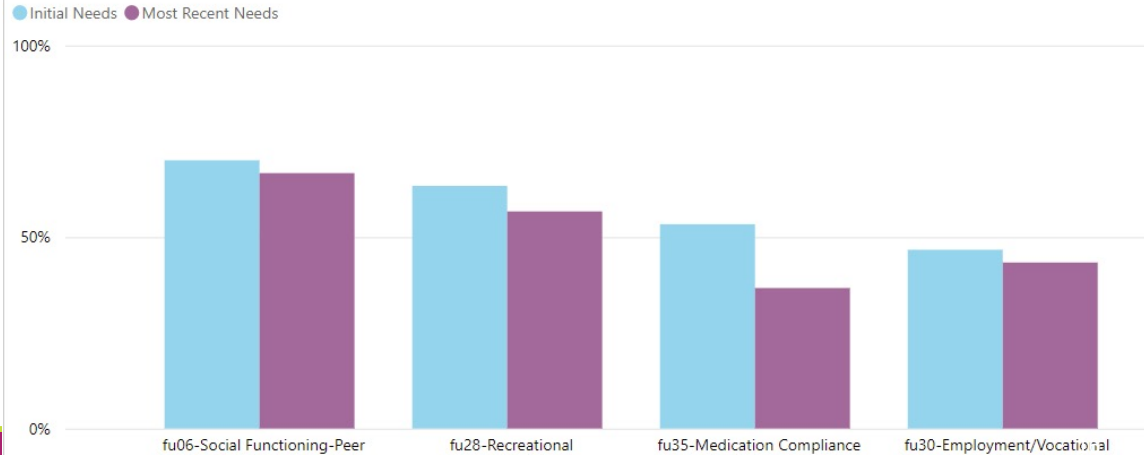
CBIT Needs Profile



Top 6 Problem Presentation and Risk Behaviors

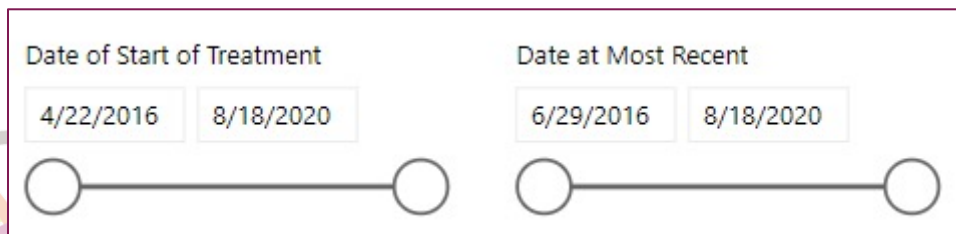


Top 4 Functioning



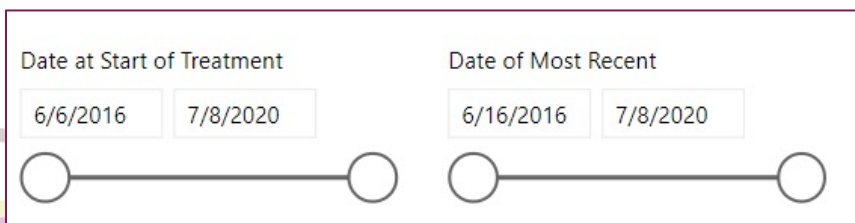
Extra Slides

program_desc	Average Total Initial Needs	Average Total Most Recent Needs	Count of Clients Observed	Time Between Measures (Months)
Case Management	10.53	9.33	153	14.97
IHDC	9.40	6.33	15	9.67
Child-Adol Partial	8.69	6.90	144	6.42
Family Based Mental Health Ser	7.64	5.62	231	5.20
Functional Family Therapy	7.40	5.29	119	4.17
Outpatient Psych Clinic	6.76	5.02	45	5.13
Brief Treatment	6.01	5.30	74	5.34
Outpatient Therapy	3.58	2.52	650	9.66



* Please note there are clients double counted in here, because they show up independently in each program.

Program	Average Total Initial Needs	Average Total Most Recent Needs	Count of Clients Observed	Time Between Measures (Months)
Psych Evaluators	9.75	7.50	4	5.00
Adult Partial	8.58	7.26	141	5.09
CBIT	6.73	6.68	37	4.59
Mobile Mental Health Treatment	6.67	5.02	81	12.35
Case Management	6.12	4.72	1258	15.12
Outpatient Psych Clinic	5.08	4.22	74	4.97
Outpatient Therapy	4.11	3.18	2390	15.17



* Please note there are clients double counted in here, because they show up independently in each program.